



New England Regional Genetics Group
presents its 5th Genetic Counselors' Conference:

Genetic Counseling In Transition: Practice and Philosophy

May 5, 2017 at the
Doubletree Boston North Shore
50 Ferncroft Road, Danvers, MA 01923

Tweet!



#nergg17



invitation code **esovg**

3YWS

), "" DM[efdf]a` S` V5a` f` WIS^4dM] Xsf
) , " I Wā_ VwV[Sd] eXa_ 8Sk>Sda` I BdM[VWf]aX@7D99- 5Sd] 5ad [eZ 7j Wgf]hV6 [dMfad
*, "" >SgdW>[UZFW? E] 5951;` efd]fadsf 4aefa` G` [hM]fkELZaa^aX? WU] W
5gd]ad]fk, FZW[] 4W VWFZVBSef] BdM]h]S` V8gfgd]aXZV0W]U5ag` eW YBdaX]e]a`
*, % 3gVdS 4W] W] ? E] 5951 9W]j
9W]Ue] 5Sc]Ma^aYk 8S_ [1S^: k]M]Za^V]h]W]S/8 fL
: W]f]STV6 [e]d]M]e]aX5a` ` W]h]W]f]e]g]W
+, % 7d]US 4^ag]ZI? E] >5951 EW]ad]9W]U5ag` e]ad? 9: 5W]V]X]d]5S` U]M]d]e] 3e]e]_ Wf
9W]V]W]g]W]U] YaX]F]g_ ad]S` V;_ b]S]f]a` 9W]U5ag` e]W] Y
#, "" <g[V0]ad]I]V]S` V7_ [k4W], D]S]d]@]W] 7 YS` V
A]h]M]h]W] aX` X]d_ S]f]a` S^S` V]E]g]b]ad] D]W]ag]d]W]X]d]8S_ [1]W]i [f]Z]D]S]d]V6 [e]W]e]W
##, "" A]I` W] 9a] W]Z]b]S` I? 6]I]6] [d]M]f]ada]X]Z]V]k]e]e]a_ S^6 [e]W]e]W]D]W]S]d]Z]S` V]F]d]M]f_ W]F]G` [f
9]S]g]U]Z]W]6 [e]W]e]W]B]Z]k]e]U]S` S` V]B]S]f] [W]F]B]W]h]W]h]W]a` 6]S]Y` ad]e
#S, "" >g` U]Z]e]ba` e]d]W]T]k]9W]j
#, "" >ad] 3` ` 5ad]M]S]I? E] 5951 4]a]f]W]Z` a^aYk` 9W]U5a` e]g]f]S` f
9W]V]F]Z]V]S]k, 3]V]S` U]W] [F]d]M]f_ W]f]aX]D]S]d]V6 [e]W]e]W
\$, "" =d]e]W]E]Z]S` ` a` I? E] >5951 6] [d]M]f]ada]X]5S` U]W]5]W]V]9]W]U]e]B]d]a]Y]S_ S]f? 9:
5]S]d]M] >S]W]U]e] [f]Z]V]0]W]U]B]d]a]X]e]a`
\$% E]W]V]W]F]Z]V]e]B]d]M]S]f]a` e
6]W` ` S]4]d]U]_ S` /4]G]f]i]F]Z]V]6]D, E]B]D]5]d]I]W]j] b^ad` Y]b]W]U]M]f]a` e]aX]5]D, E]B]D]Z]S]e]d]e]f]W] Y]W]W
W]f] Y
D]W]W]B]W]U]W] /4]G]f]i] 7]j] a_ V]Z]I]S]U] T]a` V]B]S` W]e, 9W]U]B]d]a]X]e]a` S^a] B]W]h]W]h]W]h]W]f]Z]W]@]V]f
9W]U]S]f]a` a]X]B]S` W]F]W]f] Y
Stephanie Laudisi, MS (Brandeis): Where Do We Draw the Line?: Navigating Conflicts of Interest
In the Genetic Counseling Profession
Katie Schwarting (Brandeis): An Exploration of the Art of Prenatal Genetic Counseling In Catholic
Hospitals
%% ? S]k]E]g_ _ W]h]6] [d]M]f]ad]8]S_ [k]F; 7]E]aX? S]e]S]U]Z]g]e]W]f]d]b]S` W]Z]S]d]
@]W]T]ad] E]L]W]f] Y, 7]Z]S` U]W]W]f]e]S` V]7_ W]W]U]k]B]S` e
&% 3` ` <W]W]Z]i]c]h]i` I? E] 5951 5]S]e]f] Y]S]I [W]U]@]W]D]W]g]f]e]X]h_ _ ad]W]Z]S`
#" "I" " B]S]f] [W]e]F]W]f]W]i [f]Z]S` S` Z]9]W]W] W]M]f]S]k]5]S` U]W]B]S` W
' , % @]W] ad] [Y]D]W]U]M]f]a` e]ba` e]d]W]T]k]C]g]W]f]6] [S]Y` ad]f]U]e] (, %
3]V]ag]d]

Speakers



Carrie Blout, MS CGC, manages the MedSeq Project at Brigham & Women's Hospital. Previously, she worked at Johns Hopkins, Nationwide Children's and University of Maryland Medical Center & Maryland Department of Health and Mental Hygiene. She currently serves on the NSGC Board of Directors.



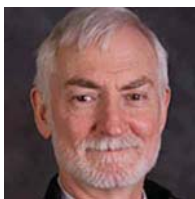
Elli Brimble is a Master's degree candidate in genetic counseling at Boston University. She has previous graduate training in molecular genetics from the University of Toronto, where she studied gene contributions to the Williams syndrome neurological profile.



Kim Cunningham is Executive Director of the PheoParaTroopers, a patient-led organization whose goal is to facilitate patient communication, supply important information to patients, and contribute to finding a cure for sporadic and hereditary pheochromocytoma and paraganglioma.



Emily Dalton, MS CGC, is the regional manager for the oncology genetic specialists at Ambry Genetics, developing research collaborations with major academic medical centers. Previously she worked at the Dana-Farber Cancer Institute in Boston and received her MS in genetic counseling from the Boston University School of Medicine.



Roger Eaton, Ph.D., has served since 1991 with the University of Massachusetts Medical School (UMMS) New England Newborn Screening Program (NENSP). He is an associate professor at UMMS. He received his Master's and Ph.D. from the State University of New York, and did postdoctoral work at Harvard Medical School.



Shawn Fayer attended middle and high school in Montreal, and earned his B.S. degree from the University of Connecticut. He returned to Montreal to earn a Master's in Human Genetics at McGill University, and is currently a candidate for a Master's degree in genetic counseling at Brandeis University.



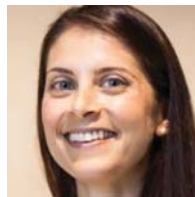
Emily Glogowski, MS MSc LCGC, holds degrees in biomedical research and human genetics. She has 15 years of clinical experience, and research interests such as developing counseling tools for WES. She previously worked at Memorial Sloan-Kettering Cancer Center, and now works as a genomics consultant for GeneDx, educating counselors and physicians about cancer, neurology, cardiology, and exome testing.



Hayley Green-Morfesi, originally from New Zealand, Hayley is a Master's degree candidate in genetic counseling at Boston University. She received an MA in Medical Humanities, Compassionate Care and Bioethics from Stony Brook University. As a former elite athlete, she has an interest in how genetics is entering the sports environment.



Ann Jeffers-Brown, MS CGC, completed her MS in Genetic Counseling at Brandeis University in 2004. From 2004-2007 she developed and implemented genetic counseling services for Elliot Health System in Manchester, NH. Since 2007, she has been employed as Regional Medical Specialist in Oncology by Myriad Genetic Laboratories. Ann currently lives in beautiful Dunbarton, NH.



Sarah Kalia, MS CGC is Director of Research Development working in the Genomes2People Research Program at Brigham and Women's Hospital and Harvard Medical School. She serves on committees of ACMG, and chairs the Personalized Medicine Special Interest Group of the NSGC.



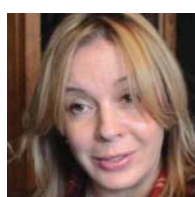
Stacey Liberman is a second year genetic counseling student at Brandeis University. Originally from New Hampshire, Stacey completed her B.A. in Psychobiology at Wheaton College in Norton, MA. After graduating from Wheaton, Stacey joined City Year New Hampshire and spent one year working in a 5th grade classroom.



Jeantine Lunshof, Ph.D., is Assistant Professor at the University of Groningen (Netherlands), and Visiting Scientist at Harvard Medical school, Department of Genetics. She has been the Ethics Consultant to the Personal Genome Project since 2006 and developed with Dan Vorhaus and George Church the innovative Open Consent.



Karen Richards is a 16 year old high school student with many rare diseases. Since her diagnoses, Karen has made it a goal to help educate and inform people what living with a rare genetic disease is like. Karen is an author and expresses her advocacy through writing. She has developed a support system for kids with rare disease called SweetLemonPies.com.



Elisa Seeger, President of the Aidan Jack Seeger Foundation, New York, is a tireless campaigner for newborn screening for Adrenoleukodystrophy (ALD). After her son died from ALD at age 7 she determined to help other families avoid the heart-break of this tragedy by testing early and advocating for early intervention.



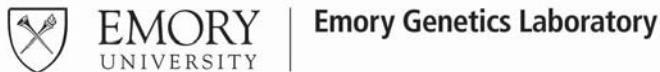
Mary Castro Summers, Director, Family TIES, formerly Director of Parent to Parent USA, and Administrator of NERGG. She is a board member of the Courageous Parents Network, and a longtime Consumer Member of the Mass. Department of Public Health Newborn Screening Advisory Committee. As a parent of a young man with special needs, Mary has been involved throughout his lifetime in working to enhance services and quality of life for families throughout New England.

PLANNING COMMITTEE

Erica Stelmach, NH
Susan Hahn, MA
Cari Cornish, MA
Lori Ann Correia, MA
Lisa Demers, NH
Sam Drazin, VT
Margaret Emmet, MA
Julie Gortze, MA
Antoinetta Sollazzo, CT

2016 Board of Directors

EXHIBITORS



DISEASE PREVENTION THROUGH GENETIC TESTING



PRESIDENT

Jacky Halliday, M.S., C.G.C.
Women's & Infants Hospital
Providence, RI

TREASURER

Merrill Henderson, M.S., C.G.C.
Genetic Counselor
Gorham, ME

PRESIDENT-ELECT

Fay Larson, R.N., M.S., N.C.
Dr. Kelley State of Connecticut
Public Health Laboratory
Rocky Hill, CT

SECRETARY

Margaret Emmet
Genetic Counselor candidate
Boston University, MA

PAST PRESIDENT

Beverly Hay, M.D.
UMass Memorial
Worcester, MA

CONNECTICUT

Lisa Brailey, M.D.
Fay Larson, R.N., M.S., N.C.
Beverly Burke, M.S.W.

NEW HAMPSHIRE

Erica Stelmach, M.S., C.G.C.
Lisa Demers, M.S., C.G.C.
Linda Kincaid, B.S.N., R.N.

MAINE

Merrill Henderson, M.S., C.G.C.
Tom Brewster, M.D.
Eleanor Mulcahy, R.N.C.
Shirley Helms, Ph.D.

VERMONT

Marinell Newton, M.S.W.
Cindy Ingham, B.S.N., R.N.
Betty Morse, H.S.T., C.S.H.N
Sam Drazin, B.A.

MASSACHUSETTS

Beverly Hay, M.D.
David Harris, M.D.
Margaret Emmet, B.A.
Elicia Estrella, M.S., C.G.C.
Janet Farrell, B.A.
Lisa Jennings, B.A.
Cari Cornish, Esq.

RHODE ISLAND

Jacquelyn Halliday, M.S., C.G.C.
Jennifer Schwab, M.S., C.G.C.
Cynthia Jackson, Ph.D.
Christelle Farrow, M.P.H.
Karen Lemke, R.N.

JOIN US NOW!

30% off new memberships at this meeting.

NERGG Annual Meeting
December 1-2, 2016
Woburn, Massachusetts

nergg.org, 617-963-0900

Twitter: @nergginc ... Facebook: /nergginc
Tweet this meeting #nergg16